

2025

Annual **REPORT**



**SOUTHWEST REGIONAL
DEVELOPMENT COMMISSION**
2401 Broadway Avenue, Suite 1 • Slayton, MN 56172

2401 Broadway Ave.
Slayton, MN
507-836-8547

Table of Contents



Executive Director message	3
SRDC Vision	4
Commissioners	5
Bus Tour	6-7
Annual Meeting	8-9
Strategic & Comprehensive Planning	10
PvSuccess & CERTs	11
Transportation	12
Economic Development	13
PACE loans	14-15
RLF loans	16-17
Highlights	18-20
Financials	21
Staff	22



Promoting Growth & Opportunities for Southwest Minnesota

We work to connect units of government, businesses, and communities with the resources, planning, and services needed to promote growth. Together we can further opportunities in Southwest Minnesota by promoting a growing workforce and business base and ensuring population stability.



From Executive Director Jay Trusty

Program Highlights

Fiscal Year 2025 saw the SRDC put the finishing touches on some projects that we'd been working on for the last few years, such as the Regional Trails Plan and the Murray County Comprehensive Plan Update. Our existing economic development programs continue, with an influx of funding for our local communities from the Minnesota Department of Commerce.

With the new/old administration in office, new federal priorities resulted in the agency pivoting in much of its work in the middle of fiscal year 2025. A project that began in 2024, the North Central Regional Food Business Center Grant, a three-state project being led by our counterpart, Region 5 Development Commission in Staples, and funded by USDA that supported resilient farm and food practices, specifically focusing on the development of critical infrastructure for small and mid-size producers including livestock, fruits, and vegetables, as well as warehouse space and storage operations was terminated by the new regime. However, during the implementation of the program, SRDC staff made many valuable connections among local groceries and producer networks resulting in new PACE and RLF loans and grants from foundation sources to bolster access to food in the region.

FY 2025 saw an upswing in planning efforts within the region as local governments saw the need to plan for much needed infrastructure improvements or to update existing plans. SRDC assisted the City of Hills with a new strategic plan and some new ordinances as the city anticipates growth in many areas. We also began working in Lyon County on an updated County Comprehensive Plan and on a project to develop the Camden Trail Master Plan to assist the county in securing regional trail designation. In keeping with the outdoor recreational land use theme, SRDC staff is at the very beginning of a process to develop a master parks plan for the City of Marshall.

As this publication is being developed the SRDC is gearing up for this year's round of CERTs Seed Grants. Clean Energy Resource Teams have awarded over \$1.98 million in seed grants to 509 energy projects since 2006. As southwest CERTs coordinator, SRDC staff continues to work across sectors to help local projects that need a hand-up to get started. As a CERTs partner, the SRDC participated in the first ever CERTs planning retreat in FY 2025, continuing the work begun in 2003 with a focus on assisting our communities in achieving their clean energy goals.

In the upcoming year, SRDC anticipates continuing to work on its planning projects as well as continuing to provide loans and other economic development assets to small businesses within the region. In this era of uncertainty, the SRDC will focus on its core programs and continue to provide assistance to our constituents to help the region prosper.



PROVIDING
PROFESSIONAL
EXPERTISE &
LEADERSHIP TO
ENHANCE REGIONAL
OPPORTUNITIES



Southwest Regional Development Commission (SRDC) is a nine-county Regional Development Organization that aims to connect units of government, businesses, and communities with the resources, planning, & services needed to promote and further opportunities in Southwest Minnesota.

Since 1973, SRDC has been a regionally-focused partner providing community development, economic development, and transportation planning initiatives across our region.

Our vision is to channel progressive collaboration between cities, counties, & townships so that knowledge & resources can be used to help the region prepare for a future where people and businesses thrive.

\$16,185.376

invested in our region
as a result of SRDC's
work in FY25

\$231,519

Contractual Services the SRDC
provided to the region +

\$15,953.857

Funds brought to the region
as a result of our work

SERVING

9

Counties

80

Cities

162

Townships

32

School Districts

1

Tribal Nation

*and over 117,000
people
in Southwest
Minnesota*

COMMISSIONERS

Executive Committee

Paul Langseth, Chair
Dennis Welgraven, Vice-Chair
Rick Anderson, Treasurer
Eric Hartman, Secretary
Miron Carney, Immediate Past Chair

Cottonwood County

Donna Gravley, Commissioner*
Jenny Quade, Municipalities
Ron Kottke, Townships

Jackson County

Kent Bargfrede, Commissioner
Mark Haberman, Municipalities*
Craig Rubis, Townships

Lincoln County

Mic VanDeVere, Commissioner*
Lyndon Johnson, Municipalities
Jeff Moen, Townships

Lyon County

Rick Anderson, Commissioner *
Pam Cooreman, Municipalities
Lori Grant, Townships
Bob Byrnes, City of Marshall *

Murray County

Dennis Welgraven, Commissioner *
Miron Carney, Municipalities *
Vacant, Townships

Nobles County

Bob Paplow, Commissioner
Steve Kellen, Municipalities
Paul Langseth, Townships *
Rick Von Holdt, City of Worthington *



Sitting: Dan Delaney, Carrie Bendix, Mic VanDeVere, Leah Bittner, Tiffany Lesmeister-Knott, Paul Langseth, JoEllen Benson, Miron Carney, Rod Hamilton. Middle: Dennis Welgraven, Sherri Thompson, Mark Haberman, , Rick Anderson, Donna Gravley, Lori Grant, Rick Von Holdt and Craig Rubis; Back: Jeff Moen, Steve Kellen, Chris Hollingsworth, Eric Hartman, Dennis Madson, Ron Kottke.

Pipestone County

Chris Hollingsworth, Commissioner*
Dan Delaney, Municipalities
Vacant, Townships

Redwood County

Bob Van Hee, Commissioner *
Leah Bittner, Municipalities
Tiffany Lesmeister-Knott, Townships

Rock County

Sherri Thompson, Commissioner
Dennis Madison, Municipalities
JoEllen Benson, Townships*

School Board

Eric Hartman, School Board *
Vacant, School Board

Lower Sioux Community

Vacant

Special Interest Groups

Vacant, Cultural Diversity
Carrie Bendix, SW MN PIC
David Sturrock,
SW MN Higher Education
Carol Biren, Health & Human Services
Kristie Blankenship,
SW MN Housing Partnership
Rod Hamilton
Economic Development

* indicates FY2025 Board Member



Edgerton Bakery

At this bus tour stop, attendees visited Edgerton Bakery, owned by Carl and Stacie Nagel. When they purchased the business, it lacked a sales tracking system, so they implemented a Square point-of-sale system to improve efficiency and customer insights. Carl begins baking at 3 a.m., with support from daughter Hope, who manages operations, and son-in-law Jared, who helps with customer service and Amazon package deliveries.



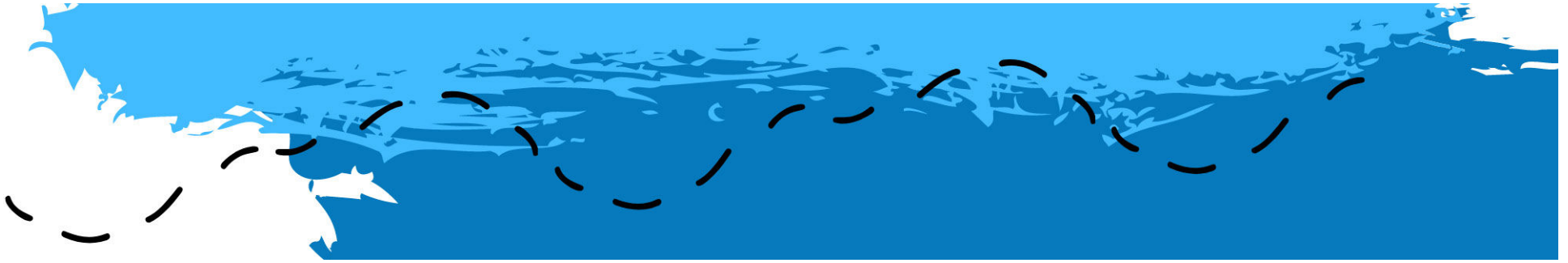
The Nagels worked with the Southwest Regional Development Commission, using both the Revolving Loan Fund and PACE program to finance the purchase and make energy-efficient upgrades. Deeply committed to community, Carl and Stacie support their student employees and remain active in local events. “You’ve got to be out there, showing up,” Carl said.



Casey Jones Trail - Woodstock

This bus tour stop highlighted the Casey Jones State Trail in Woodstock, where visitors celebrated the completion of the final paved segment connecting Woodstock to Pipestone. This milestone marks a major achievement in southwest Minnesota’s trail development, supported by the Southwest Regional Development Commission and local advocates like the Friends of the Casey Jones Trail.

The trail, managed by the Minnesota DNR, is a vital asset for recreation, tourism, and community connection. With three established segments and plans to extend from Split Rock Creek State Park to Walnut Grove, SRDC’s ongoing trail planning—paired with strong local support—is helping to realize the full vision of this historic and scenic regional trail.



RTR - Safe Routes to School

The third stop on the tour was the RTR PreK–12 School in Tyler, where the South-west Regional Development Commission helped develop a Safe Routes to School Plan in 2021. This collaborative effort with the school district and City of Tyler focused on improving walking and biking safety for students traveling to the new school building.

Over 10 months, SRDC led a planning process that identified key barriers and developed seven strategies using MnDOT’s “6 Es” framework. The plan promotes student safety, health, and community connectivity, while also positioning RTR and Tyler for future funding to bring these improvements to life.

Bolt’s Lake Benton Grocery Store

The final stop on the tour featured SRDC’s 2024 Project of the Year: Bolt’s Grocery Store in Lake Benton. Owned by Bill and Kelly Bolt since 2020, the store plays a vital role in the community, providing fresh, affordable food to residents with limited transportation options. With SRDC’s support, the Bolts secured PACE financing for energy upgrades and received Good Food Access Program funding to improve refrigeration systems.

These investments led to increased produce deliveries, higher sales, and a stronger community impact. Bolt’s now employs 14 local residents, supports the Lake Benton Food Shelf, and collaborates with regional partners to expand their reach. Future plans include opening a community coffee house—further proving Bolt’s is more than a grocery store; it’s a model of rural resilience and revitalization.





SRDC Exec. Director Jay Trusty



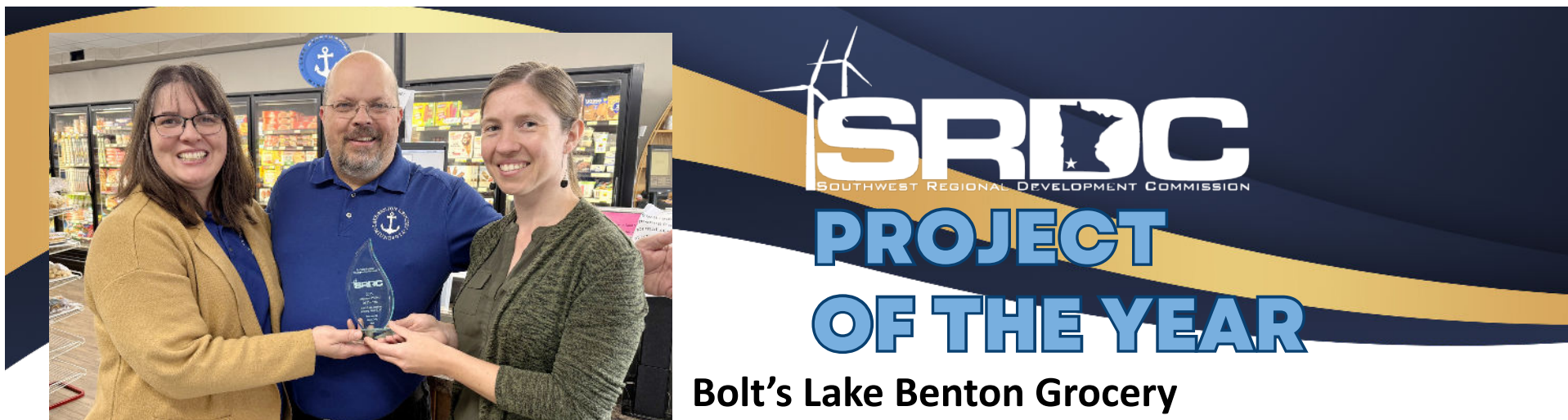
Guest Speaker: Luke Greiner

Annual Meeting

The Southwest Regional Development Commission (SRDC) held its Annual Meeting on July 10 at the Hiawatha Lodge in Pipestone, bringing together commissioners, local officials, and partners to reflect on a year of accomplishments and regional collaboration. Dan Delaney, Pipestone Mayor, welcomed attendees, while keynote speaker Luke Greiner from DEED shared valuable insights on workforce and economic trends.

The event highlighted SRDC's wide-ranging impact, including infrastructure grants in Adrian, Steen, Hardwick, and Wilder; business support for local grocers and meat processors; and leadership in planning efforts across counties, cities, and schools. SRDC also advanced clean energy initiatives, launched new programs like an upcoming E-Bike Rental in Currie, and continued strong engagement in workforce development and regional partnerships—underscoring its commitment to building a resilient, thriving Southwest Minnesota.

SRDC's dedication to long-term planning and community development was evident through major initiatives like the Lyon and Nobles County comprehensive plans, Marshall's Master Parks Plan, and the updated zoning ordinance for the City of Tracy. The agency also completed its Regional Trail Plan and drafted a 10-year Southwest Solid Waste Plan, both offering strategic direction for sustainable growth. Programs like the Energy Efficiency and Conservation Block Grant (EECBG) and expanded PACE lending continue to position SRDC as a leader in environmental stewardship and rural resilience, ensuring Southwest Minnesota remains vibrant and future-ready.



Kelly & Bill Bolt with award presented by SRDC planner Nadya Bucklin

Bill and Kelly Bolt took a leap of faith when they purchased the hometown grocery store on March 4, 2020—just days before the world would change due to the COVID-19 pandemic. With backgrounds in law enforcement and retail, and a cross-country journey that took them from California to various towns in southern Minnesota, the Bolts saw potential in a place many might overlook: a historic Main Street grocery store in a rural community. What followed was a story rooted in grit and gratitude. As pandemic restrictions shifted shopping habits, the community rallied around Bolt's Grocery. That surge of local support helped turn challenge into opportunity. Kelly brought her vision to life—expanding offerings, baking fresh goods daily, and creating a neighborhood market full of hometown flavor. Bill balanced his role as Minnesota's police chief while supporting store operations, living in the apartment behind the store and anchoring their lives in the very community they serve. But their story isn't just about groceries. It's about people. With 27 employees ranging from age 14 to their 70s, Bolt's has become a workplace of mentorship and community. They've built a family-oriented environment, where customer service and genuine connection are at the forefront. In 2024, the Bolts partnered with the Southwest Regional Development Commission to access financing through the Property Assessed Clean Energy (PACE) program. This support allowed them to upgrade their HVAC system and add refrigeration shades—essential improvements that will ensure a more comfortable experience for both staff and customers. After enduring a winter with limited heat, they now look forward to operating in a much warmer atmosphere. The Bolts described the process of working with SRDC as smooth and supportive—further demonstrating how local partnerships can make big impacts.

Looking ahead, the Bolts are planning to expand their operations by adding a coffeehouse - a space not just for a cup of coffee, but for connection, conversation, and continued community-building.

Bolt's Grocery is more than a project—it's a testament to the power of local investment, the strength of rural communities, and the passion of people who care deeply about where they live. SRDC is honored to have played a role in their journey and proud to recognize Bolt's Lake Benton Grocery as our 2025 Project of the Year.

Strategic & Comprehensive Planning

Strategic and Comprehensive Planning Across the Region SRDC continues to support communities and organizations across southwest Minnesota through strategic and comprehensive planning efforts tailored to local needs. From guiding cities like Hills through strategic visioning and zoning updates to finalizing a 5-year comprehensive plan update for Murray County, our planners are helping shape the region's future. Regional collaboration also remained strong with the completion of the Southwest Minnesota Regional Trails Plan, a major milestone made possible by contributions from counties, cities, and trail advocates. Other notable projects included strategic planning for Wonder World Preschool and Daycare and the Murray County Historical Society—both of which are now equipped with updated goals, funding strategies, and implementation frameworks to carry them into the next phase of growth.

City of Hills, Strategic Plan

Planner Webb presented the final draft of the City of Hills Strategic Plan to their City Council on Monday, June 10. Planner Webb has finished the update on the city's zoning ordinance.

Murray County, 5-Year Comprehensive Plan Update

Planner Webb and Planner Murphy have finished the work on the Murray County Comprehensive Plan 5-year update.

Wonder World Strategic Plan (Pre-school & Daycare)

SRDC completed a three-year strategic plan for Wonder World between Aug 2024 and January 2025 and received \$5,000 compensation from SWIF for the work. Other assistance for Wonder World included submitting grant applications to the Lyon County Riverboat Foundation, DEED, and Boxcar Wind; presenting to the Murray County EDA; developing a funding plan; and connecting them with other technical assistance providers.



Regional Trails Plan

The final draft of our Regional Trail Plan was completed! A printed copy was mailed out to all county commissioners. Many people from the region contributed to this project, and we thank all of you for your involvement, whether big or small.

To ensure the plan does not just sit on shelves, we made a link on our website. Hover over "our region", then click the regional trail tab at <https://www.swrdc.org> to read the plan, see video footage of trails in the region, and peruse links to trail groups and plans throughout southwest Minnesota.

We will also continue to host regular stakeholder meetings through our MnDOT contract and will continue to reach out to communities about various active transportation grant opportunities.

Funding partners include Cottonwood, Jackson, Lincoln, Lyon, Murray, Nobles, Pipestone, and Rock Counties, as well as the Cities of Wabasso, Lamberton, Walnut Grove, and Revere.

Murray County Historical Society Strategic Plan 2025 – 2030

On January 16, staff conducted a strategic planning session for MCHS. Participants reviewed progress on the past plan and then created goals and objectives for the new plan under four themes. The themes were: 1) Programming and Outreach, 2) Facilities, 3) Membership/Fundraising, and 4) Volunteers. Staff then updated the plan and sent it to the Historical Society for approval in March 2025.



Photovoltaics Supporting Cultural and Community EcoSystem Services (PV-SuCCESS)

The Photovoltaics Supporting Cultural and Community EcoSystem Services (PV-SuCCESS) project is led by the Great Plains Institute (GPI) and is supported by a collaboration of the Minnesota Clean Energy Resources Teams (CERTs), Argonne National Laboratory, and the Midwest Tribal Energy Resources Association (MTERA).

PV-SuCCESS is a research project, funded from 2024-2027, that is studying ecosystem services provided by local landscapes. The aim is to understand how large-scale solar development affects them and to develop informational tools that communities can use for planning related to solar development. The project focuses on solar developments that are larger than 1 MW (about 10 acres).

Goals of the project:

- Increase local understanding of large-scale solar and support community engagement on planning to increase benefits and mitigate risks of future projects.
- Contribute to research on the relationship between large-scale solar and ecosystem services, with the goal of increasing benefits to host communities.



CERTs

CLEAN ENERGY RESOURCE TEAMS

Over the past year, CERTs – alongside the other project partners, has been exploring local perspectives on land uses and ecosystem services, as well as experiences with and views on large-scale solar through interviews, surveys, and workshops in different communities with large scale solar projects.

CERTs staff carried out 40 interviews, in Nobles, Houston, Lyon, St. Louis, and Kandiyohi counties, and the communities of St. Peter, Fergus Falls, and Crookston. CERTs staff have also facilitated workshops in Lyon, Martin, Houston, Todd, and Nobles counties, with two workshops in most counties, and have hosted focus groups in Crookston and Fairmont. The workshops have featured guest speakers, visual preference surveys, and discussions on perceived benefits and drawbacks of solar with a focus on community benefits. The discussions have addressed the topics of farmland, aesthetics, natural resources, energy and economy, and decommissioning. SRDC was involved in the workshops and focus groups in our region, notably Nobles and Lyon Counties.

Similarly, The Great Plains institute staff have been conducting interviews with tribal communities both within and outside the state of MN, as well as other communities outside of the state.

Wabasso Walk Audit

The Southwest Regional Development Commission conducted a walk audit in Wabasso on October 9, 2024. A walk audit offers an opportunity for community members to develop strategies for enhancing walkability in their area. The group began with a classroom session before participating in a walk around the community to observe the walking conditions in Wabasso. Their observations were guided by the 6 E's of Walkability: Engagement and Planning, Equity, Engineering, Encouragement, Education, and Evaluation. After the walk, the participants shared their observations and collaborated to identify priority projects aimed at making walking and biking more comfortable and safer in Wabasso.



Camden Trail Master Plan

Planner Webb worked with the Lyon County Parks Department to rewrite the Camden Regional Trail Master Plan. The new Master Plan includes new and updated narrative sections, data from trail counters, town hall and community survey responses, updated MN DEED and US Census Demographic information, as well as some statistics from the Southwest Minnesota Trail Plan that was completed by the SRDC. Lyon County will continue to refine the plan and submit it to the Greater Minnesota Regional Parks & Trails Commission as part of the process for trying to get a Regional Designation for the trail.



Transportation

PROJECT NUMBER	AGENCY	PROGRAM	PROJECT NAME	FISCAL YEAR	TA FUNDS
053-635-032	NOBLES COUNTY	TA	Construct on-road trail on CSAH 35 (AC PAYBACK)	2026	\$ 500,000
053-635-032	NOBLES COUNTY	CRP	Construct on-road trail on CSAH 35	2027	\$ 500,000
017-613-048	COTTONWOOD COUNTY	PROTECT	Line culverts on CSAH 13	2028	\$ 410,000

Transportation Alternatives Projects

Applicant	Project Description	TA Award	Programmed Year
City of Marshall	Camden Trail – Northern Section Overlay	\$204,380	2029

Carbon Reduction Program Projects

Applicant	Project Description	CRP Award	Programmed Year
City of Minneota	Three Electric Vehicles and charging stations	\$113,988	2027



Lamberton Safe Routes to School

Red Rock Central Public Schools and the City of Lamberton partnered in the 2024–2025 Safe Routes to School (SRTS) planning process, led by the Southwest Regional Development Commission. Funded through a Minnesota Department of Transportation (MnDOT) planning grant, this effort identified barriers and opportunities for students to safely walk and bike to school. The process engaged local stakeholders and developed strategies to support both infrastructure and non-infrastructure improvements aimed at increasing active transportation for youth.

Economic Development

Southwest Minnesota

Meat Processor Workforce Development Initiative

The Minnesota Department of Agriculture (MDA) awarded a grant of \$250,000 as part of the Meat Train and Retain program. This funding will support the Southwest Minnesota Meat Processor Workforce Development Initiative, established in July 2024. The initiative aims to assist small and medium-sized meat and poultry processors by providing training, supportive services, and personalized career navigation. The initiative is expected to benefit approximately 30 individuals by addressing training gaps and implementing retention strategies to support careers in the meat and poultry industry.

United States Department of Agriculture Regional Food Business Center

In May 2023, the USDA Regional Food Business Center (RFBC) was established nationwide to promote economic opportunities and build a more diverse and resilient food system. As part of the RFBC initiative, the North Central Food Business Center (NCFBC) was formed to serve Minnesota, North Dakota, and South Dakota. The Southwest Regional Development Commission (SRDC) provided technical assistance across our nine-county region. We connected with numerous grocery stores and meat processing facilities to assist with funding opportunities to support necessary improvements at their facilities. Due to Executive Orders under the current administration, USDA Food Business Center Funding was paused in January 2025. On July 15, 2025, U.S. Secretary of Agriculture Brooke L. Rollins announced the termination of the RFBC program.

Food Systems Work

In the fall of 2024, SRDC staff collaborated with Egan's Market in Adrian, MN, to successfully submit a grant application for the MDA Meat, Poultry, Egg, and Milk Processing (MPME) program. Egan's Market received funding that covered 50% of their flooring project. Additionally, Highwater Creek Meats in Jeffers, MN, also received a grant for their application emphasizing improvements in safety for both food products and employees.

Recently, the SRDC Staff worked with several small business owners in the region to apply for the MDA Good Food Access Program Equipment and Physical Improvement Grant. Bolts Grocery Store in Lake Benton and the Ivanhoe Supermarket in Ivanhoe, MN, both received full funding for their grant requests, covering 100% of the amounts they requested.

Staff also wrote a successful grant application on behalf of the Heron Lake Mini Mart for the Minnesota Pollution Control Agency's Next Generation Refrigeration Grant. Heron Lake Mini Mart needed to replace its outdated and malfunctioning walk-in cooler and freezer, as well as its compressor and condenser.

Additionally, SRDC Staff are working with businesses in SW MN to apply for Small Business Environmental Improvement Loans. This program makes 0% interest loans available to assist Minnesota's small businesses in improving their business practices to meet or exceed environmental regulations. Loans can be used to purchase eligible equipment for environmental compliance or for site investigation and clean-up.

Staff Development

Economic Development Specialist Murphy attended the 2025 Workforce Summit in Brooklyn Park, MN, on February 26, 2025. The event focused on the economic contributions of New Americans in Minnesota. Challenges in outlying rural Minnesota included barriers such as available affordable housing, available business space, school offerings, and transportation. Murphy attended the Connecting Entrepreneurial Communities Conference on March 20-23, 2025, in Virginia, MN. The focus of the conference was how entrepreneurship connects to our regions to build a stronger economy and focused on four key components to a health and thriving region: Business Development, Community Development, Workforce Development, and Quality of Life.



Property Assessed Clean Energy (PACE)

PACE loans are a new way to finance energy efficiency and renewable energy upgrades to buildings of commercial property owners, industrial and agri-business

LOAN SIZE

- Minimum PACE Loan: \$5,000
- Maximum PACE Loan will be lesser of:
 - The actual cost of improvements, or
 - Greater of 30% of the assessed property value or 30% of the appraised value.
- Maximum PACE loan of \$100,000
- Interest rate - 3% under prime



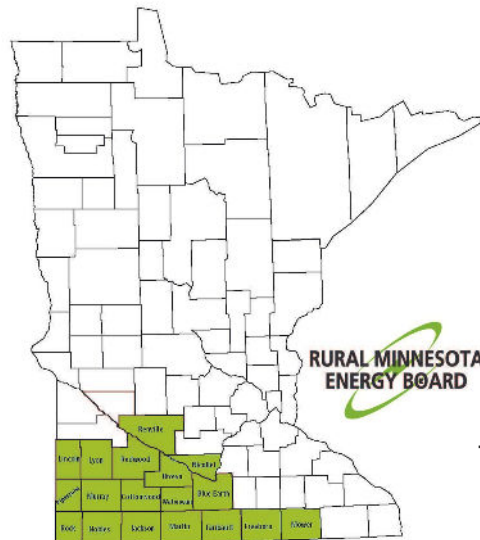
PACE is a financing tool used to assist commercial and agri-businesses with improvements to existing facilities that substantially increases energy efficiency.

Costs for the improvements are paid back through a special assessment on property taxes.

The increase in property taxes is offset by the decrease in energy costs so that the business sees no change in the bottom line.

Solar and wind are eligible purposes of PACE financing.

Energy saving measures are repaid through a property tax assessment which eliminates burden of upfront costs



Serving the counties of :

Blue Earth Brown Cottonwood Faribault Freeborn Jackson
Lincoln Lyon Martin Mower Murray Nicollet Nobles
Pipestone Redwood Renville Rock Watonwan

Contact Info

Robin Weis

PACE Program Administrator
2401 Broadway Avenue, Suite 1
Slayton, MN 56172
Phone: 507-836-1638
Email: robin@swrdc.org

Jason Walker

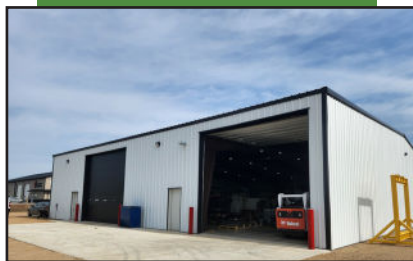
RMEB Staff
2401 Broadway Avenue, Suite 1
Slayton, MN 56172
Phone: 507-836-1642
Email: jasonw@swrdc.org

This program is administered by the SRDC on behalf of the Rural Minnesota Energy Board



**RURAL MINNESOTA
ENERGY BOARD**

Heating and
Cooling
installation



**The Benson
Company**
Luverne, MN



Opdahl Solar
Slayton, MN

Installation of
38.9 kW-AC solar unit



**Langseth
Lodge**

Split
AC Units



**Harders Saloon
on 91**
Adrian, MN

AC, water line
improvement,
electricity reductions,
LED, HVAC

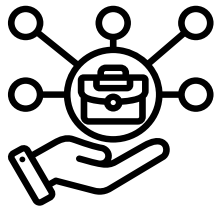


Nena's Bar & Grill
Heron Lake, MN

Refrigeration
& LED Lighting

SRDC'S REVOLVING LOAN FUND- A GAP FINANCING TOOL FOR BUSINESSES

Since the first loan that closed on 2/21/95, SRDC's Revolving Loan Fund (RLF) continues to strengthen and grow businesses in southwest Minnesota. The SRDC RLF originated as a Disaster RLF with \$1,226,000 because of extreme flooding and was later expanded with \$1,480,000 COVID-19 disaster funds. Since its inception, SRDC has assisted 1952 businesses in the region through the RLF, loaned out over \$12 million, and leveraged over \$86 million in the region through private and public funds and client equity.



Fifty-seven SRDC RLF loans are current at the end of the fiscal year which added or retained 267 jobs.

Six new loans were approved in FY 25 under the SRDC RLF. Financing was made available for businesses focusing on an eye clinic, farm equipment, aerial spraying, auto service, and tree farm, totaling \$134,000 of financing and \$475,106 leveraged.

SRDC staff would like to thank those involved in making FY25 a success! A big thank you to our five-member RLF committee. The committee met four times in Fiscal Year 2025 and manages both our Traditional RLF and COVID-19 RLF. We appreciate our loan clients, dedicated lenders, and successful partnerships. We look forward to what FY26 will bring and are available to discuss project ideas that add or retain jobs in the region. SRDC RLF application for business financing can be found at www.swrdc.org

Loans

TRADITIONAL RLF

190 Businesses assisted since its inception
79,860,202.67 Loaned out

COVID RLF

39 Businesses assisted since its inception
\$6,331,129.26 Loaned out

\$86 Million

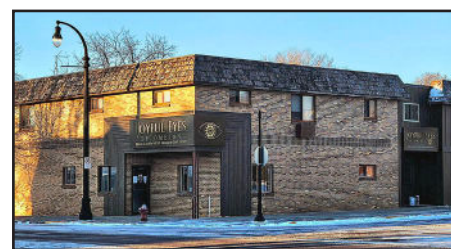
leveraged in the region
between the two
programs since
inception



Adrian Auto
Adrian, MN



Valley Tree Farm
Belview, MN



Joyful Eyes Optometry
Worthington, MN



Mr Z's All American Eatery
Pipestone, MN



Hoppe Airspray
Avoca, MN



Midway Farm Equipment
Mt. Lake, MN

***SRDC is here to
strengthen this region***

Serving the counties of
•Cottonwood • Jackson •Lincoln
•Lyon •Murray •Nobles •Pipestone
•Redwood •Rock.

CONTACT Robin Weis
SRDC Deputy Director
507-836-1638

HIGHLIGHTS



Orientation



SRDC Transportation Planner Webb addressing group

Infrastructure & Economic Development

City of Adrian – EDA Electric Substation Grant

SRDC assisted the City of Adrian with a successful EDA grant submission for an electric substation through the Public Works and Economic Adjustment Assistance NOFO. The grant request was for \$1,629,450 (50% of the \$3.26M project). The grant was submitted May 3, 2024, with SHPO compliance completed. Funding was awarded September 30, 2024, and an EDA kickoff meeting held October 24, 2024.

City of Steen – Stormwater Improvements

Submitted an MPCA Small Communities Planning Grant for \$27,700 to fund stormwater improvement planning.

City of Hardwick – USDA SEARCH Grant

SRDC helped secure a \$30,000 USDA SEARCH Planning Grant for water system improvements, including ADA accessibility planning and remote meter reading capabilities.

City of Wilder – Sewer System Planning

Planning is underway with SRDC assistance for city sewer improvements.

Cities of Pipestone and Jackson

Planning is underway with SRDC assistance for industrial parks.

Education, Community & Workforce

Career Expo – Marshall & Worthington

Over 2,000 students attended the 2024 Career Expo in September.

SRDC led the popular interactive activity “The Career is Right”, encouraging youth to explore local job opportunities.

Orientation for Elected Officials

Held March 21, 2025, at the Murray County 4-H Building, this orientation welcomed 23 officials and helped demystify SRDC’s work. Staff shared insights into the programs they lead, providing clarity and connection.

Southwest RSDP Annual Meeting

Nadya Bucklin attended the 2024 SW RSDP Annual Meeting in Lamberton, fostering connections and supporting sustainable development strategies.

HIGHLIGHTS



CERTs Retreat



Highland Creek Waters

Energy & Environment

EECBG Program – Energy Planning for Small Communities

SRDC received \$99,959.78 from the Energy Efficiency and Conservation Block Grant program. Grants up to \$20,000 are available to eligible cities and counties for energy audits, engineering studies, and resiliency planning—prioritizing disadvantaged communities.

Renewable Energy Video Presentation

Executive Director Jay Trusty recorded an educational video for the Energy Ambassador Toolkit explaining wind and solar growth in SW Minnesota, economic drivers, transmission challenges, and what lies ahead.

CERTs Organizational Retreat

Jay Trusty and Nadya Bucklin participated in the CERTs (Clean Energy Resource Teams) planning retreat held at Deep Portage Learning Center in Hackensack, MN, October 29–31, 2024.

E-Bike Rental Program – Currie

SRDC facilitated local discussions to support a potential E-Bike rental program at End-O-Line Park. The goal: launch four E-Bikes for public use by June 1, promoting use of the Casey Jones Trail.

Business & Grant Support

Meat, Poultry, Egg, and Milk Processing (MPEM) Grants: Egans Market, Adrian – Received \$11,378 for USDA-mandated flooring upgrades. Highwater Creek Meat Market – Awarded funding for essential meat processing equipment to improve safety and sanitation.

Good Food Access Program (GFAP) Grants

Bolts Grocery, Lake Benton – \$70,120 awarded. Ivanhoe Supermarket – \$70,000 awarded. Both grants will help small grocers invest in equipment and improvements for increased access to affordable, nutritious food.

Taylor Corporation – Fire Equipment Grant

Application submitted for \$67,500 toward a new pumper truck. The City of Jeffers was awarded \$30,000 in this round focused on emergency services.

HIGHLIGHTS



Workforce Summit



Transportation Conference



Community Grow

SRTS Infrastructure Grant Awards
City of Adrian - \$297,332

- 5th Street sidewalk connecting Elementary School & Middle/High School

Active Transportation Infrastructure Grant Awards

City of Marshall - \$279,724

- East Lyon Street multi-use trail from E. Main Street to Jewett Street (State Match for a Federal Transportation Alternative Grant)

City of Worthington - \$1,000,000

- Multi-use trail between Okabena Lake and existing TH 60 multi-use at Nobles Street

Nobles County - \$1,000,000

- CSAH 35 on-road trail between the Cities of Adrian and Worthington

Over \$2.5 million
Safe Routes to School and
Active Transportation
Infrastructure
funding awarded in SW MN

FINANCIALS

Revenues

Program Revenues

Charges for Services & Other	\$ 204,359
Operating Grants	\$ 400,956

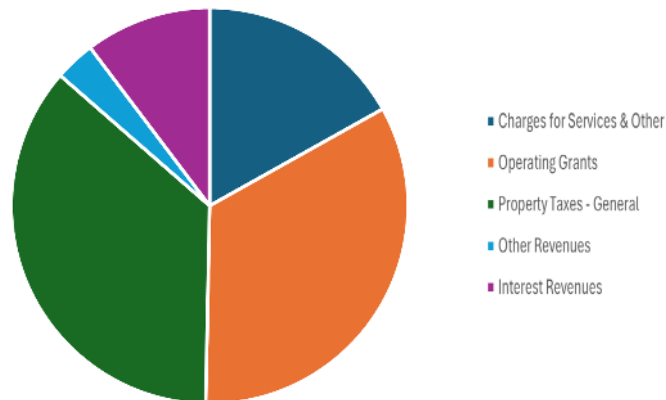
General Revenue

Property Taxes - General	\$ 432,827
Other Revenues	\$ 39,428
Interest Revenues	\$ 123,354

Total Revenues **\$ 1,200,924**

Expenses

Governmental Activities	\$ 978,479
Total Expenses	\$ 978,479
Change in Net Position	\$ 222,445



2023 Audit

The FY23 audit was conducted by Kinner & Company Ltd, Certified Public Accountants, Tracy, Minnesota. The auditor's report expresses an unqualified opinion on the General Purpose Statements of the Southwest Regional Development Commission.

Revenues	FY2025 Year End*	FY2025 BUDGET
Tax Levy	465,238	465,617
Current Contracts (includes R9 McKnight)	422,795	464,053
MN Department of Transportation	75,000	75,000
Economic Development Administration	104,449	105,119
EDA Trails grant	58,291	53,000
RLF- both Covid and Regular	74,097	60,000
Commerce - State Comp Grant	98,188	179,000
CERTS Funds	86,160	86,160
PACE loan orig/int/misc	4,803	6,800
Regional Food Business Center Grant	30,000	30,000
Interest Earned & Miscellaneous	33,141	19,184
Building Reserves Used	32,016	31,850
Total Revenues		
	1,484,178	1,575,783
Expenditures	FY2025 Year End*	FY2025 BUDGET
Committee Expense	22,890	30,300
Salaries & Fringe	1,010,037	1,055,065
Staff Travel	53,934	60,000
Office Space	9,123	44,194
Postage	3,186	5,349
Communications	8,696	9,219
Print/Publication	7,512	20,504
Insurance	2,927	5,917
Supplies-Mtg/Wkshp Expenses	14,151	17,000
Program Supply - reimbursed by contracts	11,494	
Computer	20,103	41,250
Audits	24,884	41,000
Consultant/Contracted Services/Legal	3,422	33,275
Dues/Memberships & Other	4,200	7,200
Financing Fees & Other	581	5,500
Equipment/Building updates	32,159	10,000
PACE loan interest	692	508
Debt Service-Principal & Interest	10,000	10,000
Building Lease Principal Payment	23,183	23,183
Total Expenditures	1,263,175	1,419,464
Overall Balance	221,003	156,319

MEET THE TEAM



JAY TRUSTY
EXECUTIVE DIRECTOR



ROBIN WEIS
DEPUTY DIRECTOR



JASON WALKER
COMMUNITY DEVELOPMENT
DIRECTOR



MELISSA NELSON
FINANCE DIRECTOR



KATHY SCHREIBER
ADMINISTRATIVE
SPECIALIST



JODI KLEIN
ACCOUNTING
SPECIALIST



KIM MURPHY
ECONOMIC
DEVELOPMENT
SPECIALIST



NADYA BUCKLIN
DEVELOPMENT
PLANNER



CHRIS WEBB
TRANSPORTATION
PLANNER



SHEILA CROWLEY
COMMUNICATIONS
SPECIALIST

2401 Broadway Ave. Slayton, MN 56172
507-836-8547

WWW.SWRDC.ORG

Our Work

The Southwest Regional Development Commission is dedicated to fostering thoughtful, resilient growth and strong leadership across Southwest Minnesota. We work hand-in-hand with communities, local leaders, and partner organizations to ensure every project contributes to a thriving region. Our efforts range from gathering community input on ideas or concerns, to developing long-term plans for growth, to supporting and strengthening businesses and entrepreneurs. We also help advance initiatives, address challenges that may hinder progress, and provide solutions designed to sustain and enhance community vitality.

Every community is unique, and we take pride in delivering assistance tailored to their specific needs. Rooted in the history, values, and vision of Southwest Minnesota, our work is created in collaboration with our communities—and always for their benefit.



www.swrdc.org