

ADRIAN

# SAFE ROUTES to SCHOOL

A plan to make walking and biking to school a safe, fun activity



## PROGRAMS

EQUITY + EDUCATION + ENCOURAGEMENT + EVALUATION



### STUDENT EDUCATION

**What:** Encourage & educate students through school curriculum & developing resources.

**Who:** School, Teachers, Civic Organizations

**How:** *Walk! Bike! Fun!* Curriculum

### COMMUNITY EDUCATION

**What:** Use strategic partnerships to educate and encourage the community on walking & biking safety.

**Who:** School, SHIP, Community Ed, Law Enforcement

**How:** Bike Rodeos

### IN-CLASS INCENTIVES

**What:** Encourage students through school programming & incentives.

**Who:** School, Teachers

**How:** Walking Field Trips



### CLASSROOM ACTIVITIES

**What:** Encourage & educate students by expanding classroom activities.

**Who:** School, Teachers

**How:** Bike fixing in Welding Class

### WALK/BIKE SAFETY TIPS

**What:** Educate and encourage community members and students by publishing walk/bike safety tips.

**Who:** School, City

**How:** Targeted Outreach & Messaging

### BUS STOP & WALK

**What:** Encourage students through school incentives.

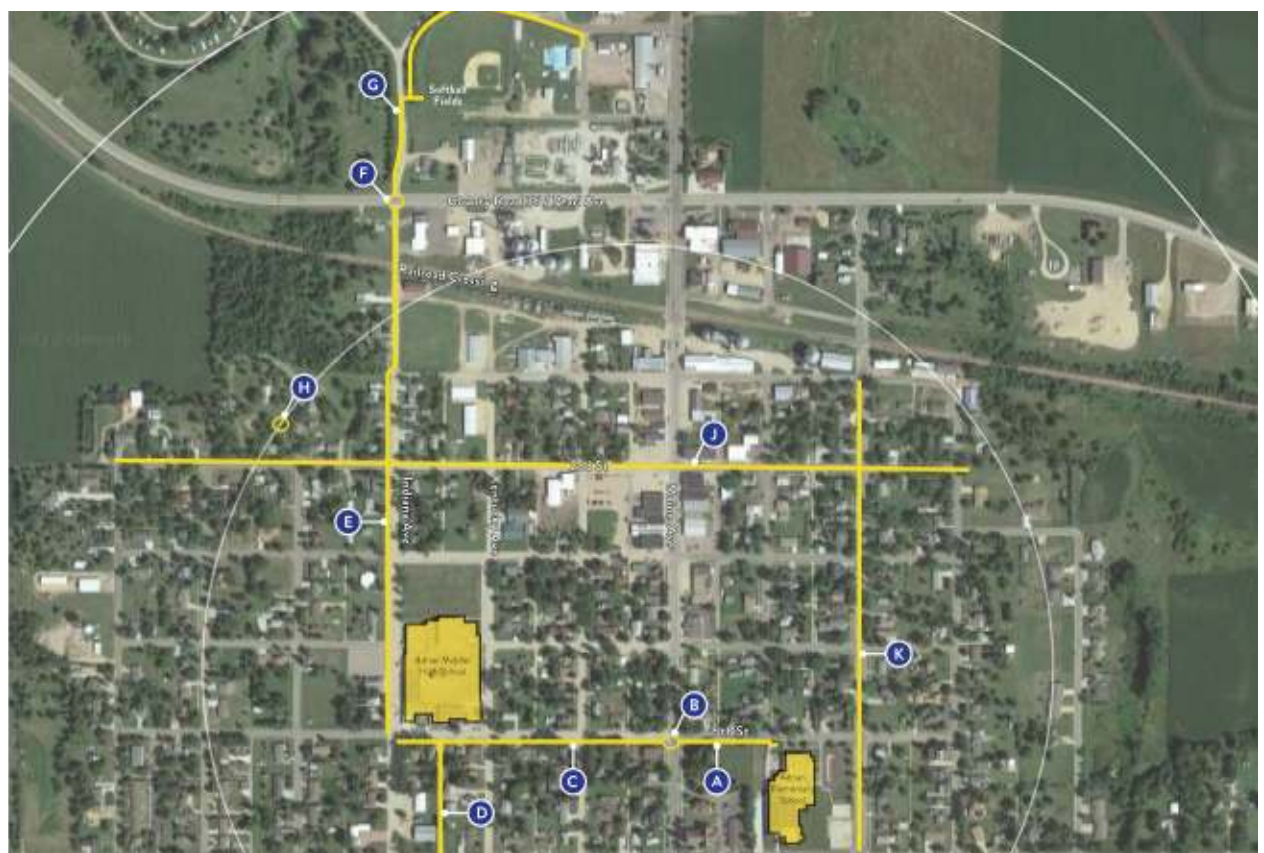
**Who:** School, City, Civic Organizations

**How:** Bus Stop & Walk events, Walk/Bike Days



## INFRASTRUCTURE

ROUTES + STREET PROJECTS



### INFRASTRUCTURE RECOMMENDATIONS

- Install sidewalk along the south side of 5th Street from the elementary school to Maine Avenue, and Maine Avenue to Indiana Avenue.
- Install a pedestrian crosswalk flasher system to cross Maine Avenue along 5th Street.
- Install sidewalk along the west side of Indiana Avenue from the middle/high school to the intersection of W Pearl Street, including a railroad crossing near Pearl Street, and along the west side of Park Path from Pearl Street to the ball fields.



## GET INVOLVED

Plan your walking or biking route with your student, watch for students and respect school zone speed limits, and show your support by volunteering! Contact your school principal to learn how you can get involved.

Learn more about Safe Routes to School in Minnesota at: [www.dot.state.mn.us/saferoutes/](http://www.dot.state.mn.us/saferoutes/)

## CONTACT

**Molly Schilling**, Adrian School District Superintendent  
[m.schilling@isd511.net](mailto:m.schilling@isd511.net) | 507-827-0904

**Jill Wolf**, City Administrator  
[jwolf@cityofadrianmn.com](mailto:jwolf@cityofadrianmn.com) | 507-483-2849

